



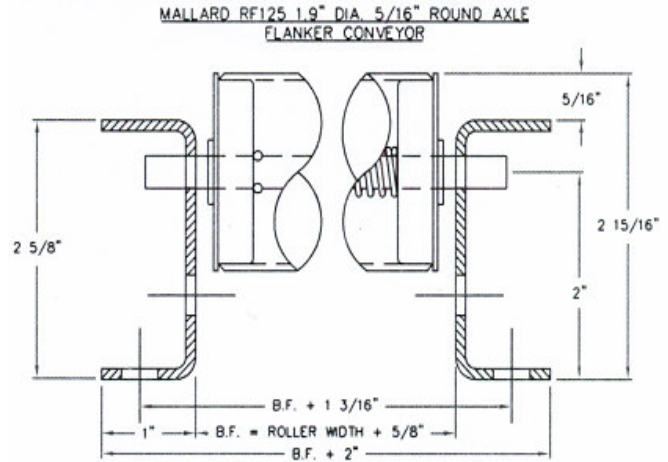
101 Mallard Road, Sterling, IL 61081, Phone: 815-625-9491, 800-243-6694, Fax: 815-625-9498

[www.mallardmfg.com](http://www.mallardmfg.com)

## 1.9" Diameter 5/16" Round Axles Gravity Rollers (Flanker Conveyor)

### Standard Specifications

Tube:	1.9" O.D. x 16 Gauge
Axle:	5/16" Round Axle-Spring Loaded
Roller Material:	Galvanized Steel
BF Range:	See Chart Below Others Available Upon Request
Roller Centers:	2", 3", 4", 6"
Roller Capacity:	200 lbs,
12 Gauge Rails:	2-5/8" Tall with 1" Flanges
Mounting Holes:	.39" x 1" Every 1-1/2"
Lengths:	5' & 10' Others Available Upon Request



### STANDARD 10' SECTIONS

### STANDARD 5' SECTIONS

BF Size	OAW	Model #		Wt (lbs)	Model #	
		Frame-Roller-Axle-BF-Length-Ctrs			Frame-Roller-Axle-BF-Length-Ctrs	Wt (lbs)
12"	14"	RF125-191631R-12BF-10-2		158	RF125-191631R-12BF-5-2	79
		RF125-191631R-12BF-10-3		118	RF125-191631R-12BF-5-3	59
		RF125-191631R-12BF-10-4		98	RF125-191631R-12BF-5-4	49
		RF125-191631R-12BF-10-6		77	RF125-191631R-12BF-5-6	39
16"	18"	RF125-191631R-16BF-10-2		184	RF125-191631R-16BF-5-2	92
		RF125-191631R-16BF-10-3		140	RF125-191631R-16BF-5-3	70
		RF125-191631R-16BF-10-4		115	RF125-191631R-16BF-5-4	58
		RF125-191631R-16BF-10-6		89	RF125-191631R-16BF-5-6	45
20"	22"	RF125-191631R-20BF-10-2		223	RF125-191631R-20BF-5-2	112
		RF125-191631R-20BF-10-3		162	RF125-191631R-20BF-5-3	81
		RF125-191631R-20BF-10-4		131	RF125-191631R-20BF-5-4	66
		RF125-191631R-20BF-10-6		101	RF125-191631R-20BF-5-6	51
24"	26"	RF125-191631R-24BF-10-2		256	RF125-191631R-24BF-5-2	128
		RF125-191631R-24BF-10-3		185	RF125-191631R-24BF-5-3	93
		RF125-191631R-24BF-10-4		149	RF125-191631R-24BF-5-4	75
		RF125-191631R-24BF-10-6		113	RF125-191631R-24BF-5-6	57
30"	32"	RF125-191631R-30BF-10-2		305	RF125-191631R-30BF-5-2	153
		RF125-191631R-30BF-10-3		218	RF125-191631R-30BF-5-3	109
		RF125-191631R-30BF-10-4		175	RF125-191631R-30BF-5-4	88
		RF125-191631R-30BF-10-6		131	RF125-191631R-30BF-5-6	66
32"	34"	RF125-191631R-32BF-10-2		322	RF125-191631R-32BF-5-2	161
		RF125-191631R-32BF-10-3		229	RF125-191631R-32BF-5-3	115
		RF125-191631R-32BF-10-4		184	RF125-191631R-32BF-5-4	92
		RF125-191631R-32BF-10-6		137	RF125-191631R-32BF-5-6	69
36"	38"	RF125-191631R-36BF-10-2		354	RF125-191631R-36BF-5-2	177
		RF125-191631R-36BF-10-3		252	RF125-191631R-36BF-5-3	126
		RF125-191631R-36BF-10-4		200	RF125-191631R-36BF-5-4	100
		RF125-191631R-36BF-10-6		149	RF125-191631R-36BF-5-6	75
40"	42"	RF125-191631R-40BF-10-2		387	RF125-191631R-40BF-5-2	194
		RF125-191631R-40BF-10-3		274	RF125-191631R-40BF-5-3	137
		RF125-191631R-40BF-10-4		218	RF125-191631R-40BF-5-4	109
		RF125-191631R-40BF-10-6		161	RF125-191631R-40BF-5-6	81